



**Renault Clio, 1.0 Intense, vm. 2019**

Engine: 999cm<sup>3</sup>, 3 cylinder, turbo

Gearbox: 5 speed manual

Top power: 74kw (100hp) /5000rpm

Top torque: 160nm /2750rpm

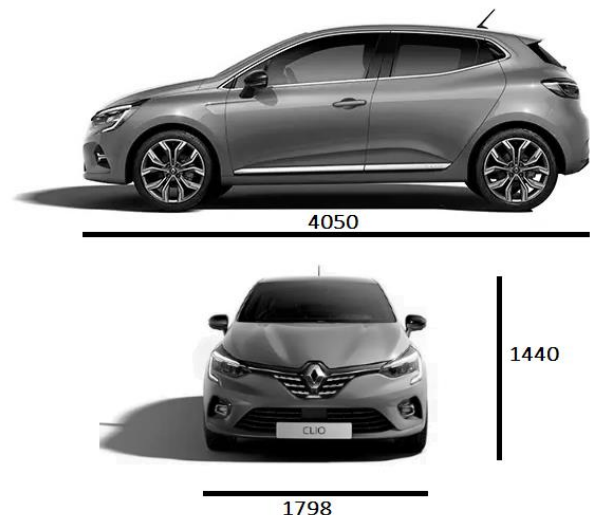
Weight: 1165 kg

Fuel consumption: 5,2 l/100km

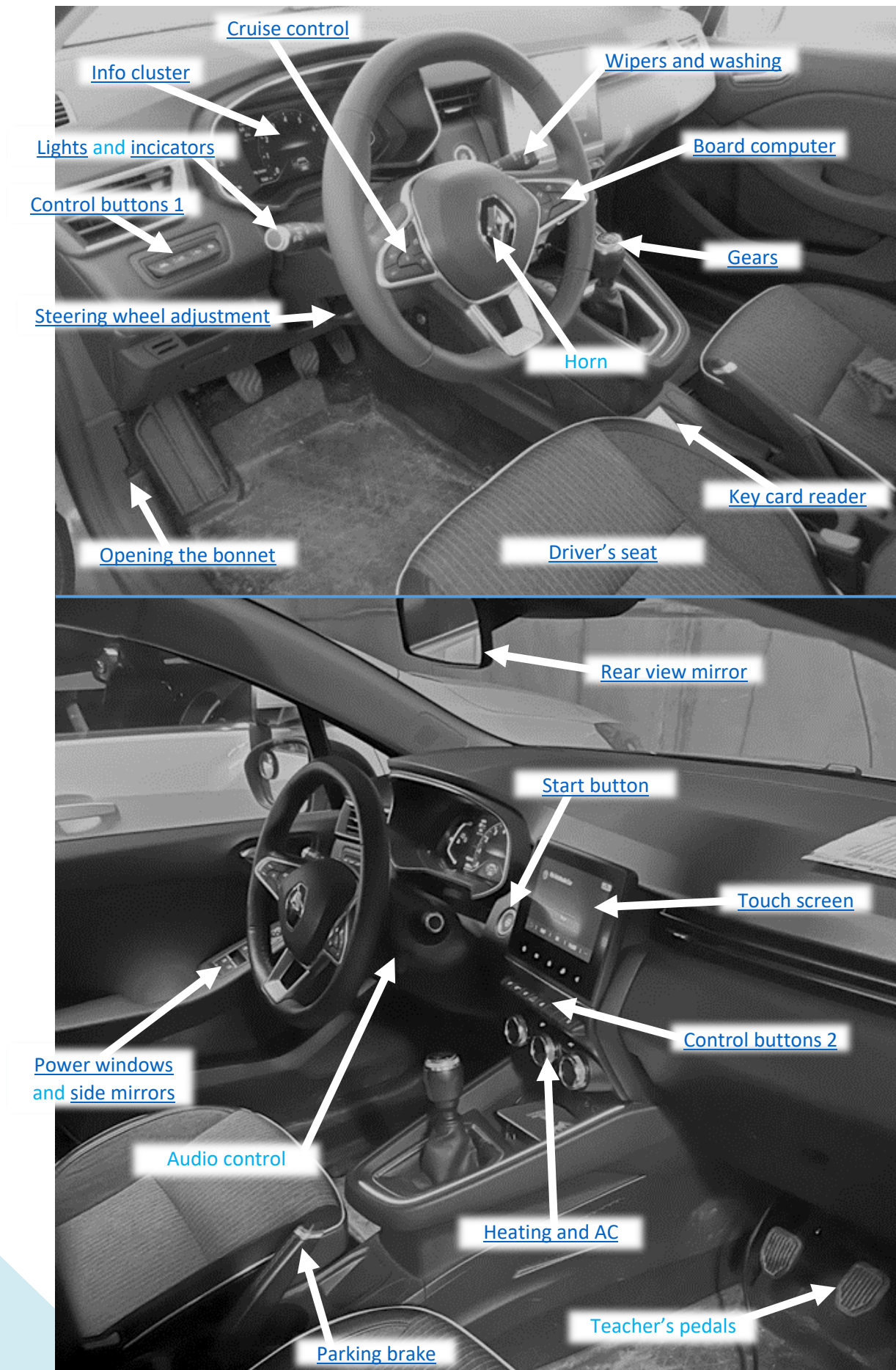
WLTP CO2 Emissions: 117g/km

Summer tyres: Bridgestone

Winter tyres: Nokian non-studded



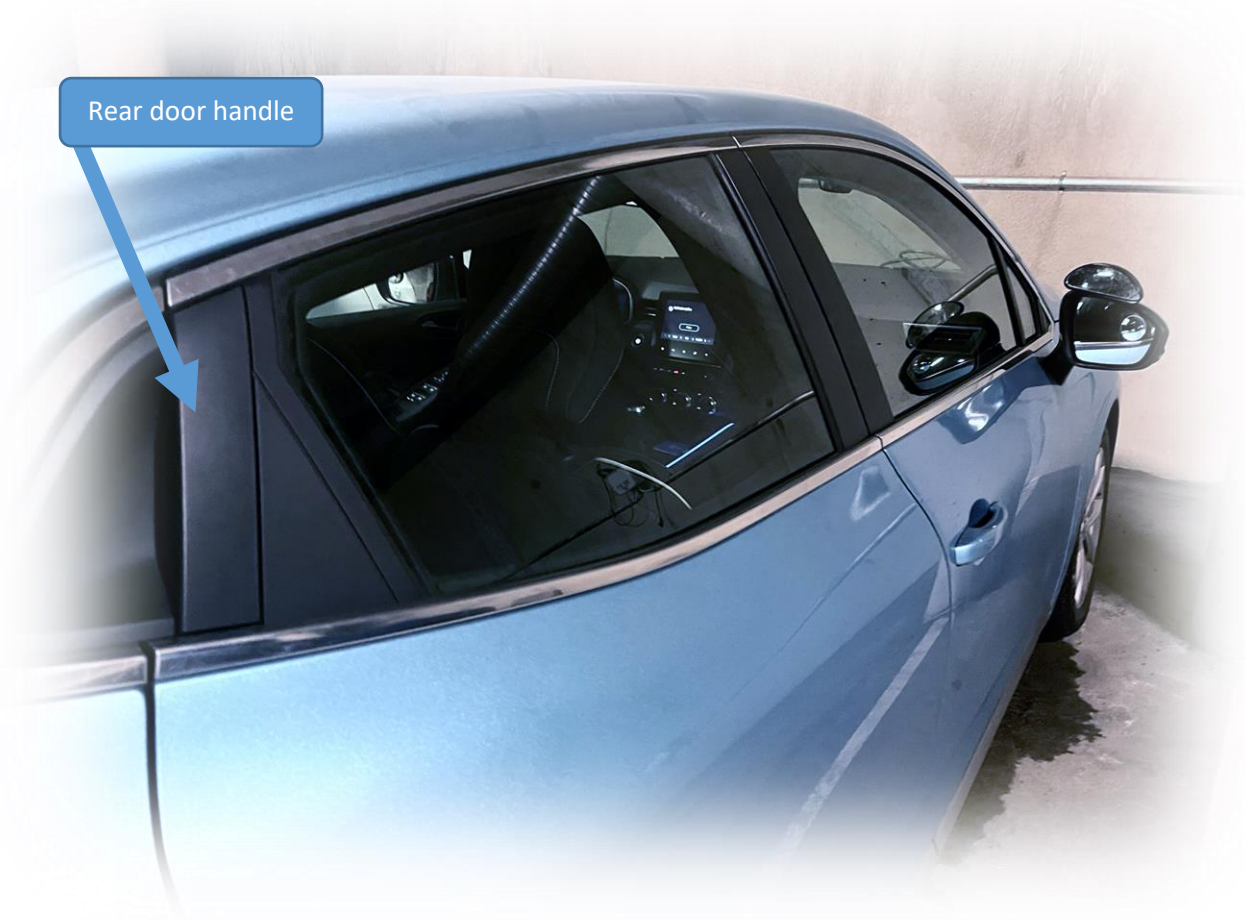
## CONTROLS





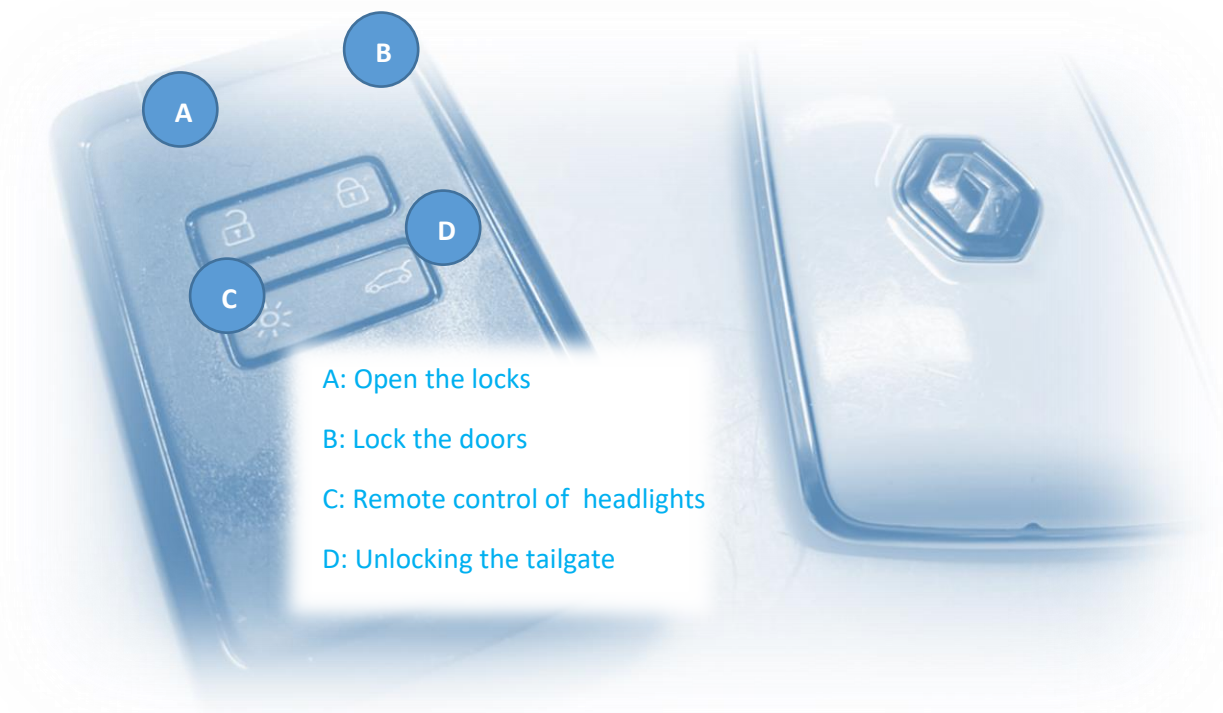
## OPENING AND LOCKING THE DOORS

The doors lock automatically when the key is near the car, the locks open. The rear door handle is hidden in the rear edge of the rear window. The tailgate opening button is above the license plate.



## OPENING AND LOCKING THE DOORS

The key card can be in your pocket while driving. But sometimes the car may not recognize the key card in the car. In this case, the car asks to insert the key card into the key card reader in the center console.



## KEYLESS START



Before starting, make sure that the parking brake is engaged, the gear is in neutral and the clutch or brake pedal is fully depressed. The car starts with the gear on only when the switch is pressed to the bottom. Touching the Start button for the first time turns the car on. A second touch starts the engine.

The engine is turned off by pressing the button once. The lights and displays turn off when you open the driver's door.

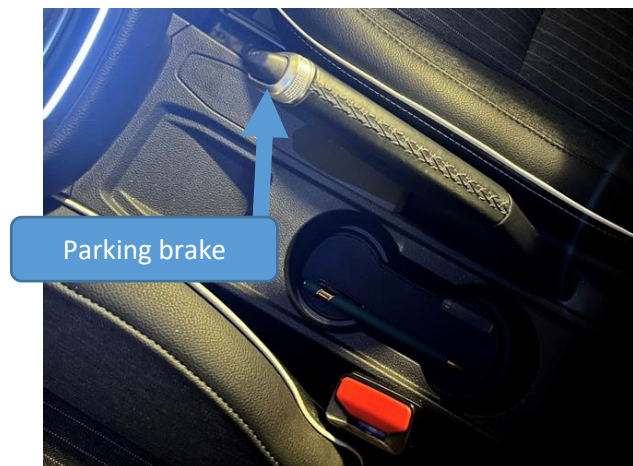
If you turn off the car by accident, immediately press the clutch pedal all the way down. And the car will start automatically. If you do not press the switch to the bottom immediately after the car is turned off, the car may not start after pressing the switch. In this case, press the clutch down and calmly start the car by pressing the start button. Accidentally turning off the car often can cause problems for the car's starting system.

## PARKING BRAKE

The parking brake (handbrake) is manual. When the car is parked and the parking brake is engaged, the parking brake lever is in an upright position at the top. When driving, the parking brake is off and the lever is down.

Open the parking brake by carefully lifting the handbrake lever slightly upwards and pressing the release button to the bottom. After that, hold the release button down and lower the parking brake lever all the way down.

When you park the car, raise the parking brake lever all the way up without pressing the release button.



## GEARS

The Clio has five gears. Always start in first gear. When turning, second gear is the preferred gear.

1. 6 – 11 km/h
2. 12 – 20 km/h
3. 21 – 49 km/h
4. 50 – 69 km/h
5. 70 > km/h

When shifting into reverse, first shift into neutral and release the clutch pedal up. Finally, press the switch all the way down again and shift the gear to reverse gear.

Drive economically and keep the engine revs low. Try to change to a higher gear already when the revs rise to 2000 rpm, but driving in too high a gear does not reduce fuel consumption. Change actively enough.





## SEAT ADJUSTMENT

First, adjust the height of the seat using the height adjustment lever (A) on the outer edge of the seat. By lifting up the lever once, the front edge of the seat rises up about 0.5 cm. Pressing the lever downwards lowers the seat accordingly.

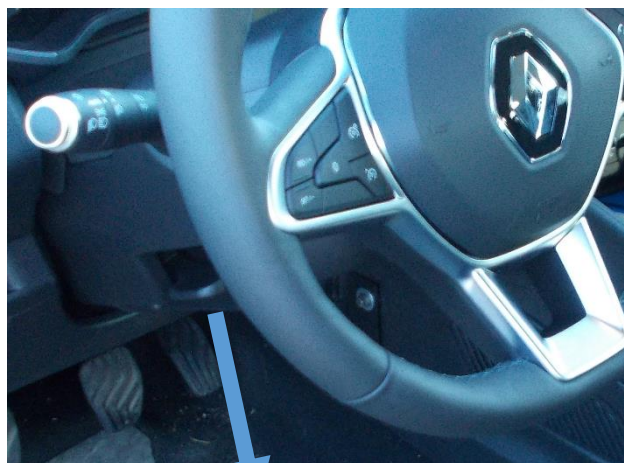


The driver's seat distance adjustment (B) can be found under the front edge of the seat. By lifting the lever (B) upwards, you can move the seat forwards and backwards. Adjust the seat so that you can press the switch to the bottom with your left foot.

The adjustment of the inclination of the seat back (C) is a lever on the front edge of the seat. When you raise the lever all the way up, you can move the angle of the backrest. When you release the lever (C), the seat back locks into the desired position.

## ADJUSTING THE STEERING WHEEL

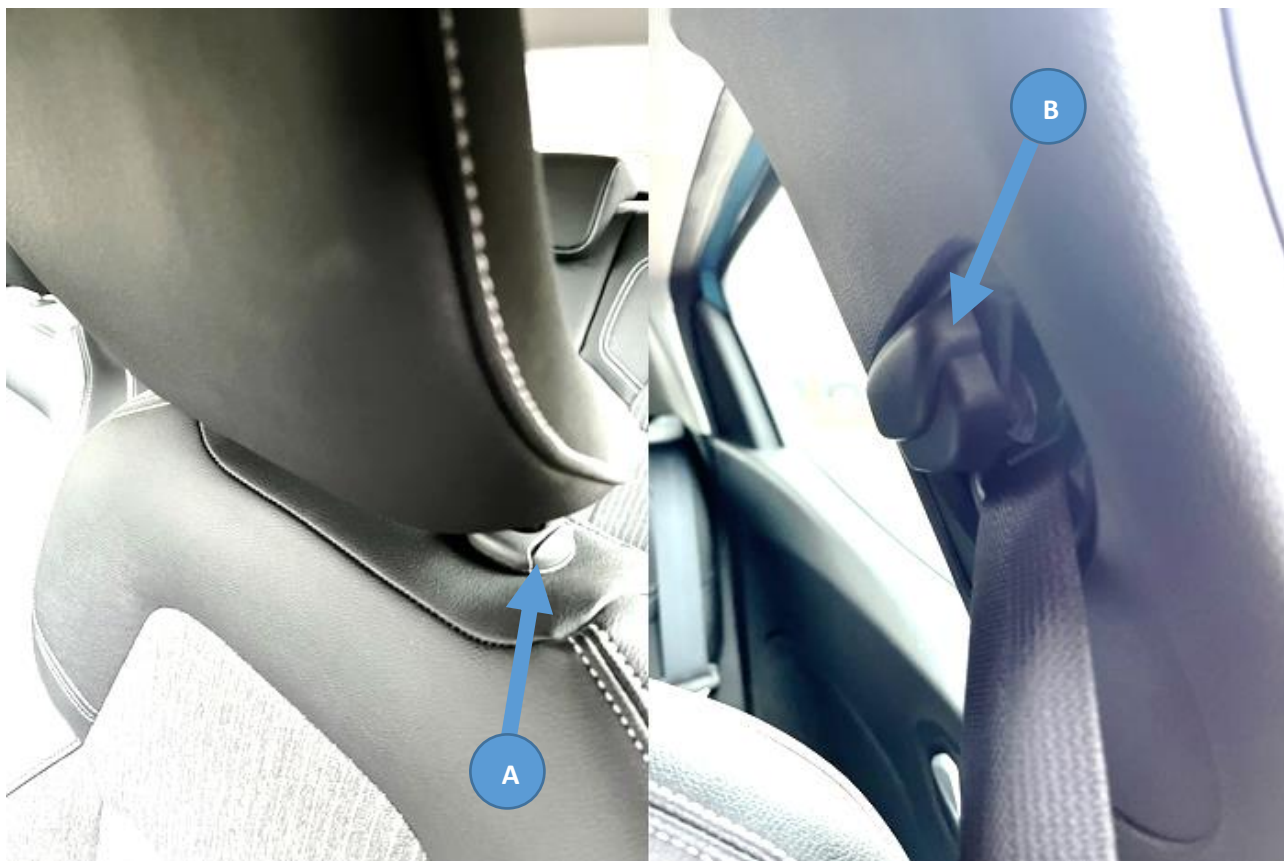
When driving, your hands should be on the sides of the steering wheel. Adjust the steering wheel so that you also reach the top of the steering wheel when you turn the steering wheel. The steering wheel adjustment lever is under the steering wheel on the left side. Pull the locking lever all the way down. You can now adjust the height and distance of the steering wheel.



Pull the lever down

## HEADREST AND SEAT BELT

The car's headrest is very high and usually does not need to be adjusted. The headrest can be adjusted downwards by sliding the button (A) inside. The head support can be raised upwards without pressing the button.

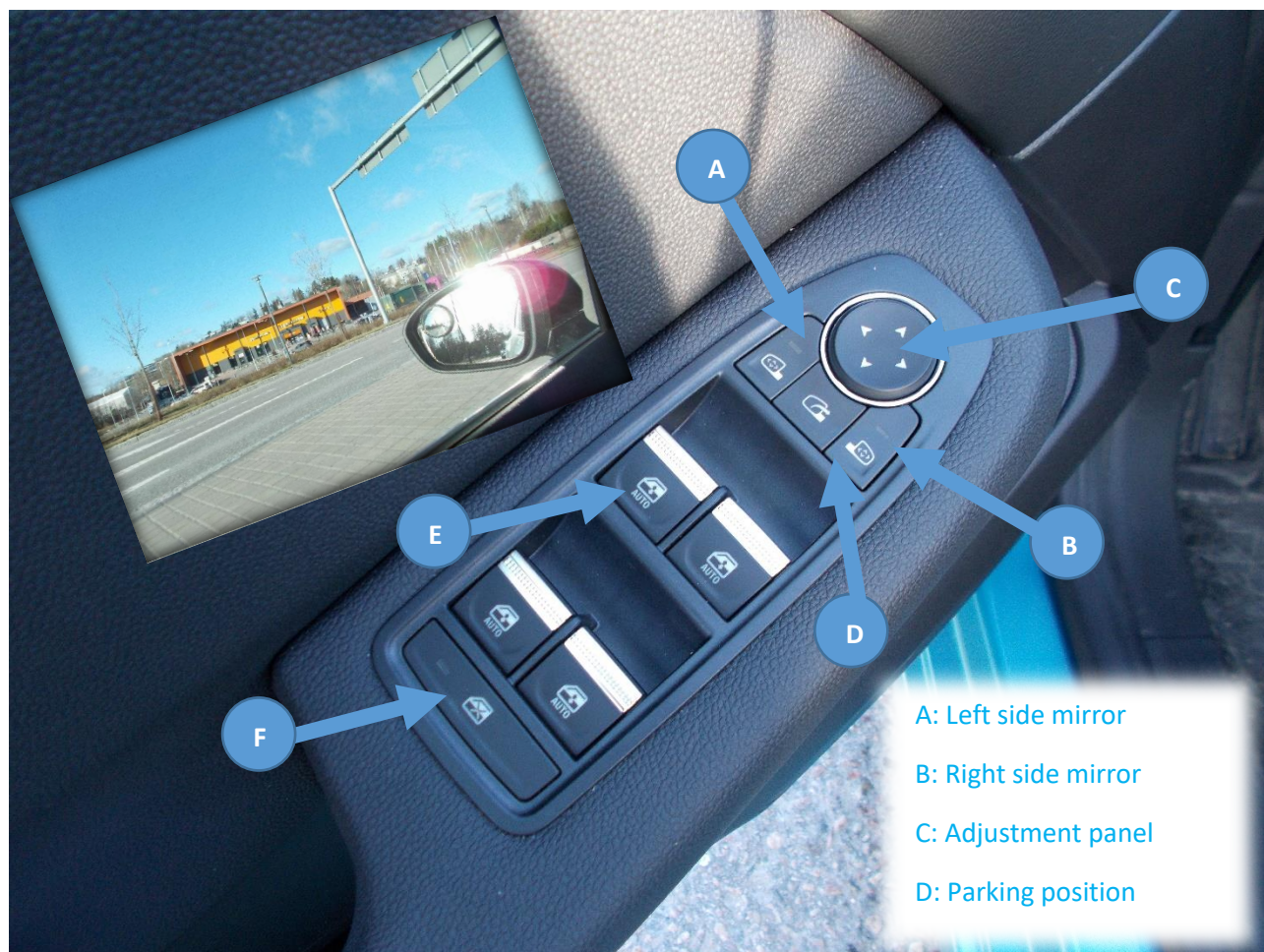


Make sure that the seat belt does not become loose when you fasten the seat belt. If the seat belt presses on the neck, you can try adjusting the top height of the seat belt. Press the button (B) in to adjust the seat belt.



## ADJUSTING THE MIRRORS

The adjustment switches for the side mirrors are located in the driver's door. Start by choosing an adjustable mirror (A) or (B). When you press the selection button, the red light on the button lights up to indicate that the mirror can be adjusted. Adjustment is done with the round panel (C). The button (D) turns the side mirrors against the car body to the parking position.



## ELECTRIC WINDOWS

All switches (E) for electric windows are on the driver's door handle, and each door has a door window opening switch. It is possible to turn off the rear window switches by pressing the button (F). You can open the window by pressing the front edge (E) of the switch button down. Closing the window is done by lifting the button upwards.



Night position

## REAR VIEW MIRROR

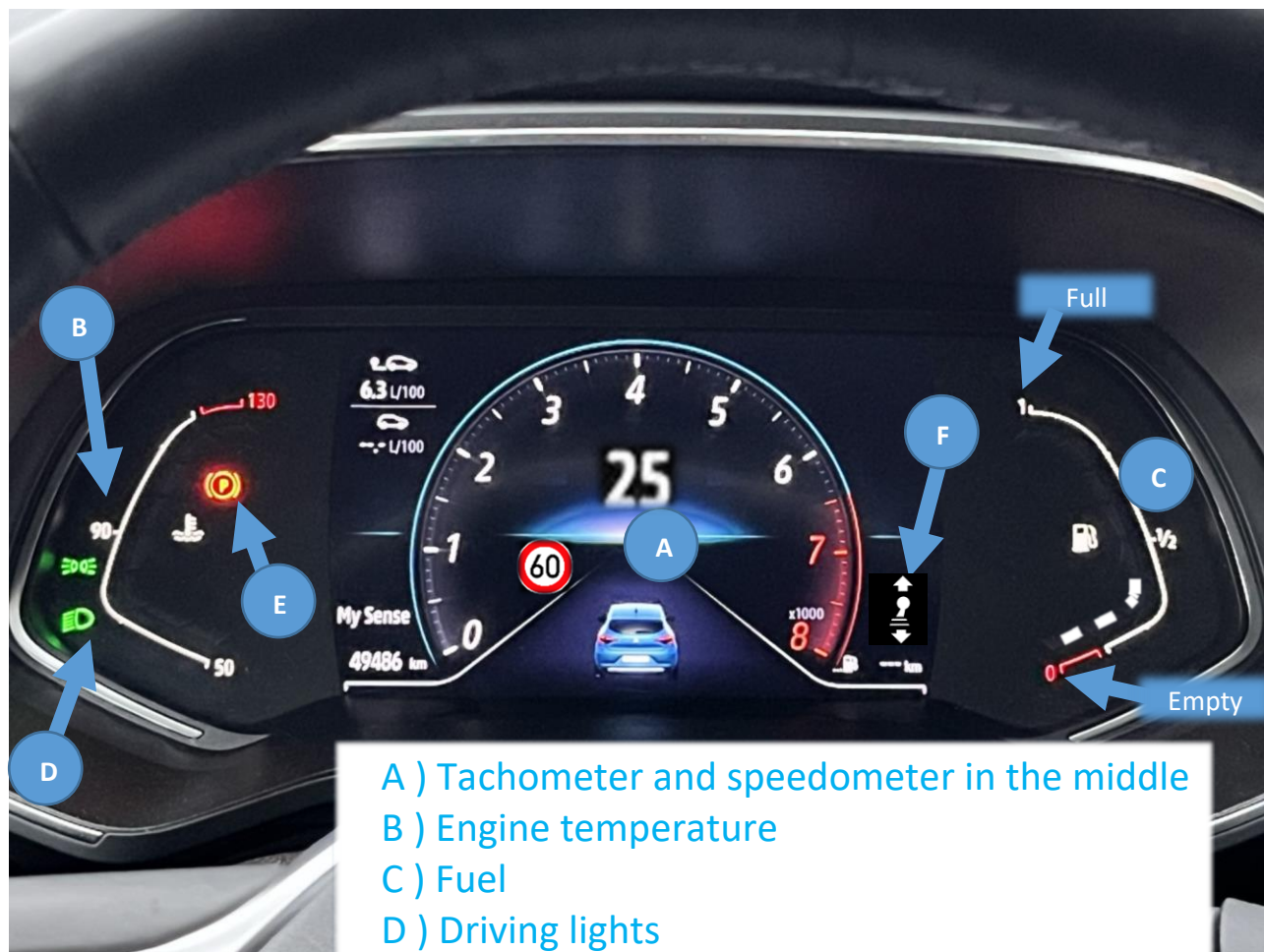
Adjusting the rear view mirror is done by turning the mirror. Turn the mirror by the edges and avoid touching the mirror to avoid fingerprints. Adjust the rearview mirror so that you can see the rear window completely. There is a night position switch under the mirror.



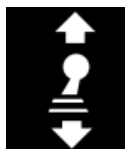
## INFO CLUSTER

It is possible to modify the Renault Clio's info cluster via the car's central screen. The speed is shown in digital numbers on the instrument panel, but it is also possible to switch to a traditional speedometer in the settings. It is possible to display the speed limit next to the speed meter.

The fuel gauge (C) shows the fuel situation with white bars.



- A ) Tachometer and speedometer in the middle
- B ) Engine temperature
- C ) Fuel
- D ) Driving lights
- E ) Parking brake
- F ) Gear shift instructions



The gear shifting indicator shows an up or down arrow if you need to shift gear.



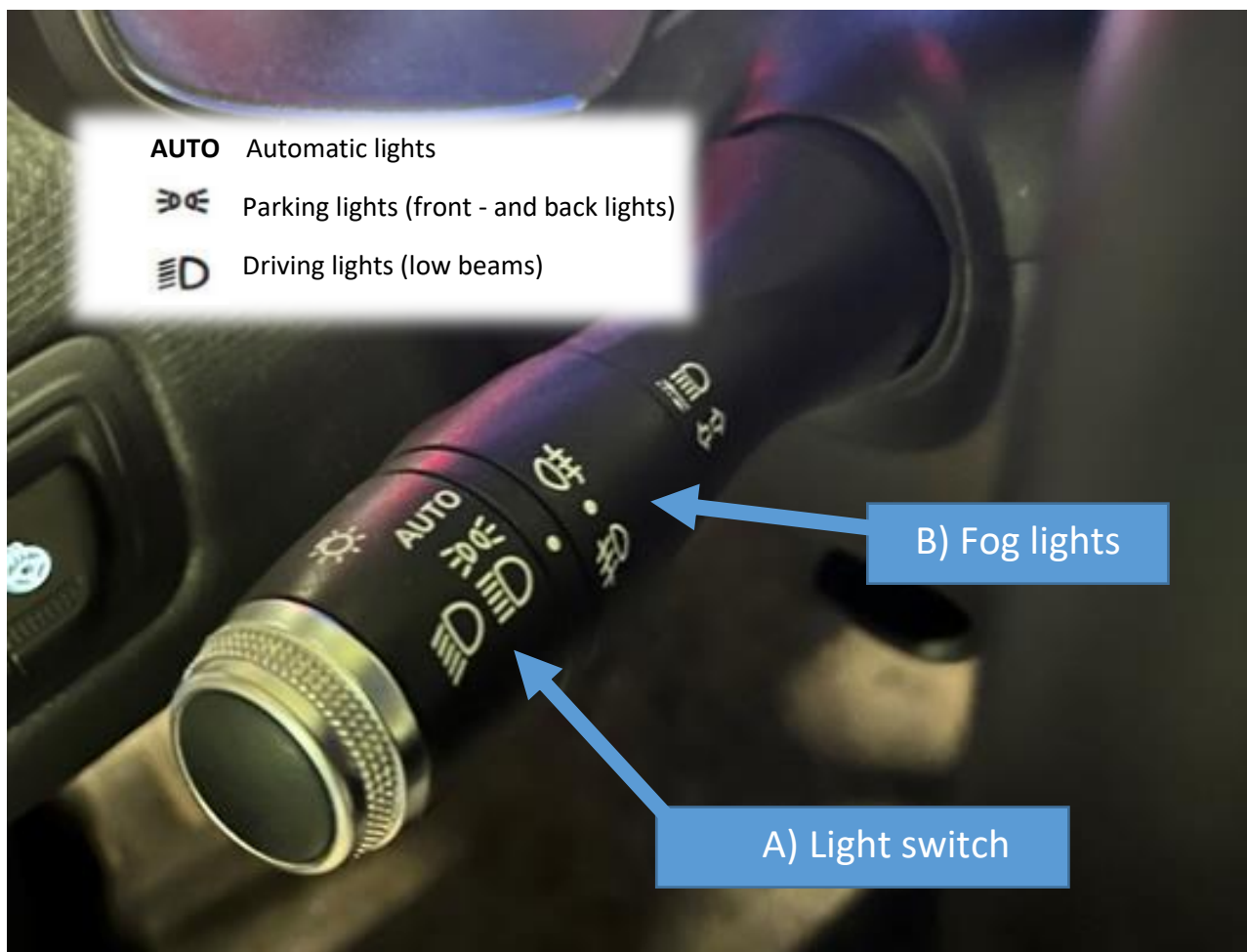
Parking lights (front- and back lights)



Driving lights (low beams)

## DRIVING LIGHTS

The light switch is a rotating roller (A) at the end of the flasher. When the switch is in the automatic position, the car selects the appropriate lights according to the lighting. In the dark, the car uses the headlights and in the light, the daytime running lights. With daytime running lights, the rear lights are not on. If the rain sensor is switched on in rainy weather, the car will turn on the headlights, and the tail lights will also be on. However, it is recommended to use headlights when driving. The headlights are automatically switched off when you turn off the engine and open the door. In Clio, the light switch can always be in the headlights on position.



The switch for the fog lights is the inner rotating roller (B) of the indicator. By turning the roller upwards once, the rear fog light is switched on. By turning the roller up a second time, the rear fog light is switched off. You can turn on the front fog lights by turning the roller (B) down, and the second turn turns the front fog lights off.



## INDICATORS AND HIGH BEAMS

The blinker is on the left side of the steering wheel. Raise the mustache up (1) to blink right and press the mustache down (2) to blink left. After turning, the blinker turns off automatically when you straighten the steering wheel.

You can turn on the high beams from the blinker when the headlights are on. Push the mustache forward (A) to turn on the high beams. Pull the mustache towards you (B) to turn on the dipped beam.



## EMERGENCY BLINKER

The emergency flasher switch is in the center console below the touch screen. You can use emergency flashers in the event of an accident or to warn other road users of danger. If the car turns off or stops by accident in a dangerous place, it is recommended to turn on the hazard lights.



## HEATING AND AIR CONDITIONING

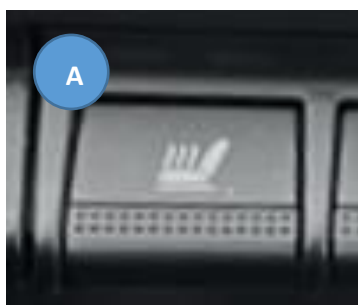
Clio's air conditioning controls are located in the car's center console. Adjusting the temperature is done by turning the roller (2). The selected temperature is shown in the center of the scroll and by pressing the scroll you can turn on the automatic air conditioning. With roller (1), you can adjust the fan speed. The fan has 8 speeds. The air direction is done with a roller (3). You can adjust the air to come up to the windshield, to the air ventilators on the middle of the car's dashboard or down to the footwell.



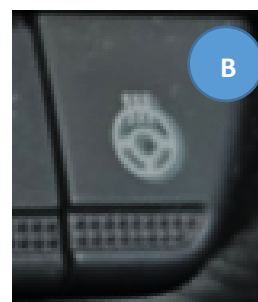
- |   |                         |
|---|-------------------------|
| 1. Speed of the fan   | 4. Powerful blowing     |
| 2. Temperature (celsius) and automatic air condition button | 5. Rear window heating  |
| 3. Direction of air   | 6. Air conditioning A/C |
|   | 7. Air recirculation    |

When you switch on automatic air conditioning (2), the car uses the fan and air direction automatically. The fan (1) should normally be kept at speed 2, or if the weather is rainy, speed 3 keeps the windows dry better. If the windows are badly fogged up or visibility is very limited, you may not drive. By pressing the button (4), the car switches on the powerful blowing on the windshield and also turns on the rear window heating (5) automatically. Turning on the air conditioning also helps to improve visibility when the indoor air dries out.

If you drive behind an old smoking car, turning on the interior air circulation helps prevent smoke from entering the car. Indoor air circulation prevents outside air from coming in, so this can cause windows to fog up from the inside.



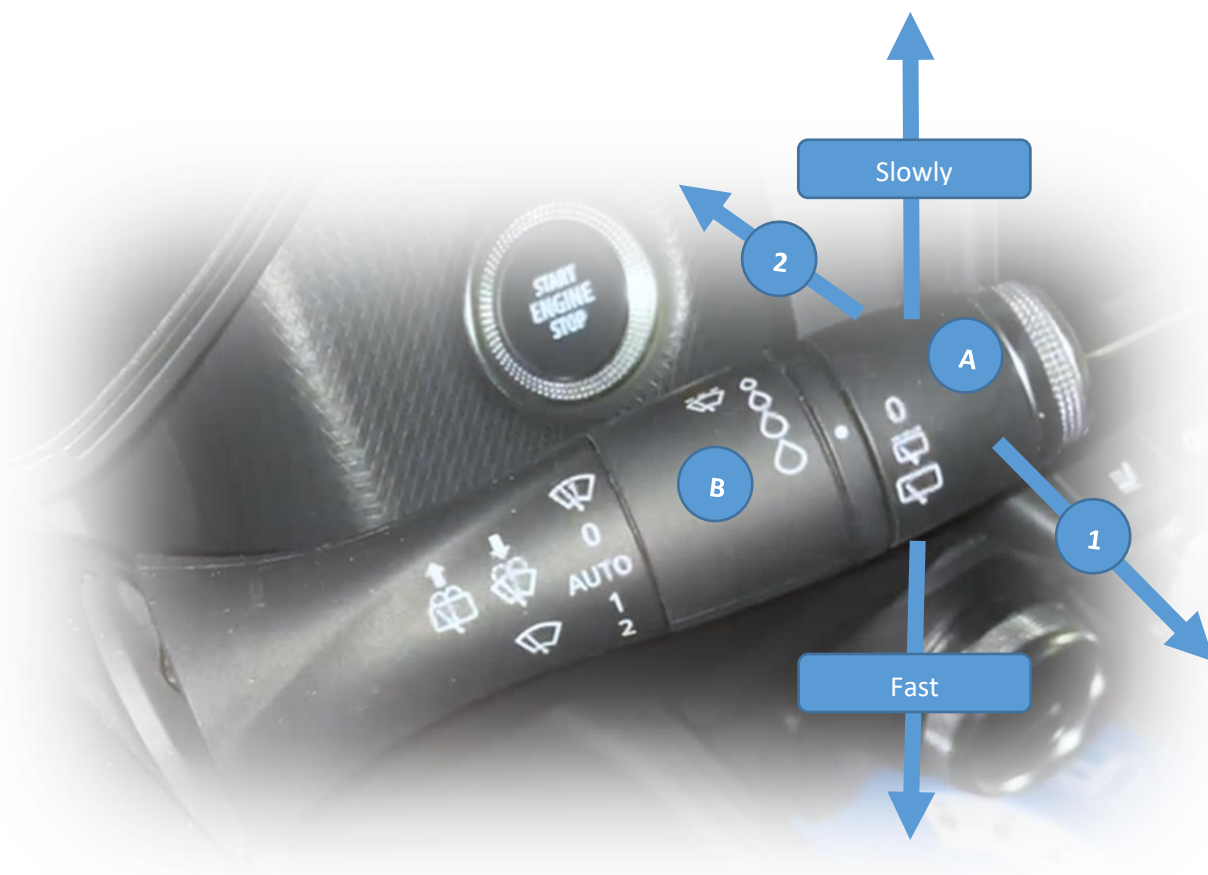
The buttons for the seat heaters (A) are in the row of buttons below the touch screen. The steering wheel heater switch (B) can be found on the dashboard on the left side of the steering wheel.





## WIND SCREEN WIPING AND WASHING

The wipers are on the right side of the steering wheel. By gently pressing down one notch, you can set the windshield wipers to automatic wiping (AUTO/rain sensor). You can adjust the sensitivity of the rain sensor with the inner rotary switch (B). A larger water drop means a more sensitive reaction of the wipers to water. By moving the wiper mustache lower, you can also switch the wipers to continuous wiping or fast wiping. One sweep is done by raising the mustache upwards from the zero position.



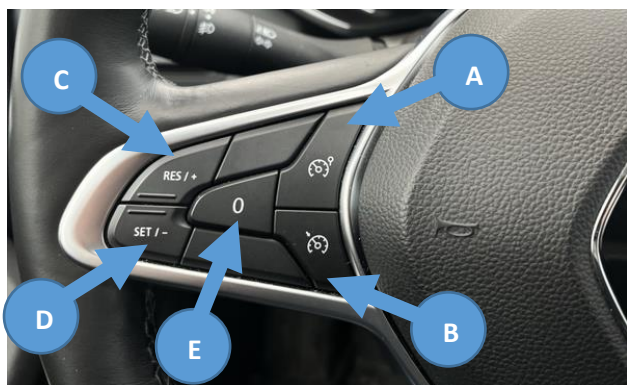
The wipers are on the right side of the steering wheel. By gently pressing down one notch, you can set the windshield wipers to automatic wiping (AUTO/rain sensor). You can adjust the sensitivity of the rain sensor with the inner rotary switch (B). A larger water drop means a more sensitive reaction of the wipers to water. By moving the wiper mustache lower, you can also switch the wipers to continuous wiping or fast wiping. One sweep is done by raising the lever upwards from the zero position.

## OTHER FUNCTIONS

The SOS emergency call button can be found on the roof of the car. In the event of a major crash, the car automatically calls the emergency center. If the accident is minor and the airbags do not deploy, the car will not contact the emergency center. You can call the emergency center yourself by pressing the SOS button.



The safety belt warning light for the driver and front passenger can be seen on the front edge of the roof. The red light indicates that the seat belt is open and you cannot drive. Information about the rear passengers' seat belt use is shown on the instrument panel display. The roof panel also contains the interior lights and their operating switches. The interior lights can be switched to work so that when the door is open, the interior lights come on.



## CRUISE CONTROL

On the left side of the steering wheel are the control buttons for the cruise control. On the right side of the steering wheel are the operating buttons for the on-board computer. Cruise control makes the driver's job easier on a long journey, because you don't have to touch the gas pedal all the time, but the car keeps a constant speed.

- A) Speed limiter
- B) Cruise control
- C) Increase speed
- D) Decrease speed
- E) Off button



## TOUCH SCREEN

Renault Clio's touch screen has several functions, but these functions are not important for driving. It is possible to modify the car's settings via the screen. When you start the car, the screen starts automatically, but the screen is activated by pressing the OK button on the screen or automatically shortly after starting.



The image of the reversing camera is shown on the screen every time you shift into reverse gear. The camera image disappears with a small delay when you shift the gear to neutral.

Normally, the navigation route and the speed limit in the area are shown on the screen. The navigator's maps may contain incorrect information about speed limits and even though the car also uses a camera to recognize traffic signs, as a driver you should always be aware of the valid speed limit.

It is possible to switch off safety systems that assist the driver via the center screen. For example, the lane keeping assistant cannot work normally if the lane markings are hidden under the snow. In this case, the car may make incorrect interpretations and cause unexpected movements. The lane keeping assist can also be turned off with its own button on the left side of the steering wheel.

## CONTROL BUTTONS 1

There are four buttons on the left side of the steering wheel. With button (1) you can turn off the lane keeping assistant. The assistant automatically steers you back into the lane if you drive close to the white line. The lane keeping assist is normally always on, but especially in winter it may be better to switch the assist off, because the car cannot see road markings under the snow. By pressing the button (1), you can choose whether you want to completely turn off the assistant or turn on only the warning. The warning device warns using an audio signal if you drive too close to a white road marking, but the car does not steer automatically.



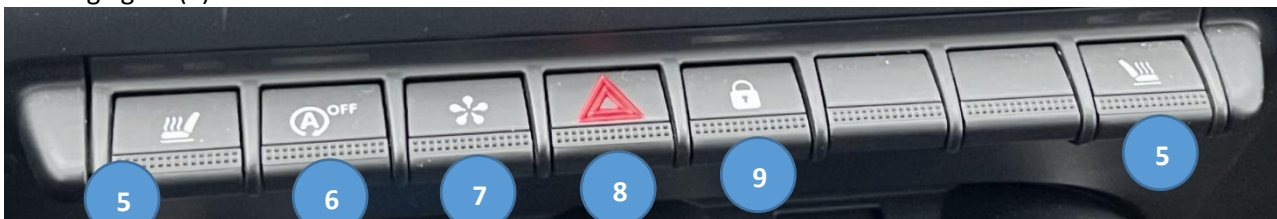
With button (2) you can adjust the brightness of the instrument cluster and the central display. you can press the button or lift it up. In sunny weather, you may need to adjust the screen brightness.

With this button (3) you can adjust the height of the headlights. You can lift the button up or press down.

Steering wheel heating (4)

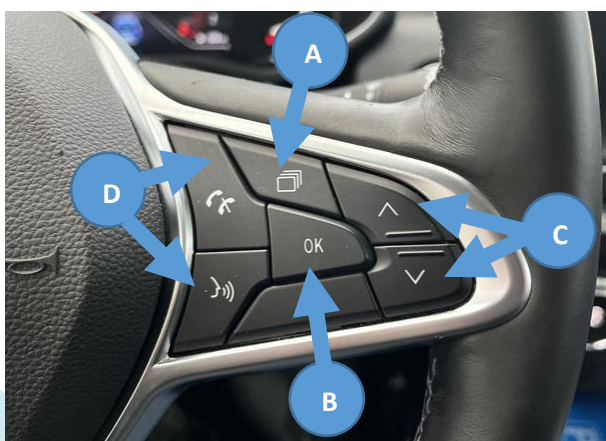
## CONTROL BUTTONS 2

In the center console, below the touch screen, there are several buttons and also a switch for the hazard warning lights (8).



The switches for the seat heaters (5) can be found on the edges of buttons. The seat heater has two powers. With the first press, the heater goes to full power and by pressing again to lower power. The third press turns off the heating. The engine Start/Stop automatic shutdown can be switched off by pressing the button (6). When you shift into neutral and open the clutch pedal up, the engine shuts off. By pressing the button (7), it is possible to immediately access the car personalization system. The central locking can be locked and unlocked by pressing the button (9).

## BOARD COMPUTER



A) Computer's tab

B) OK selection button

C) Control buttons up and down

D) Receiving a call and muting the sound

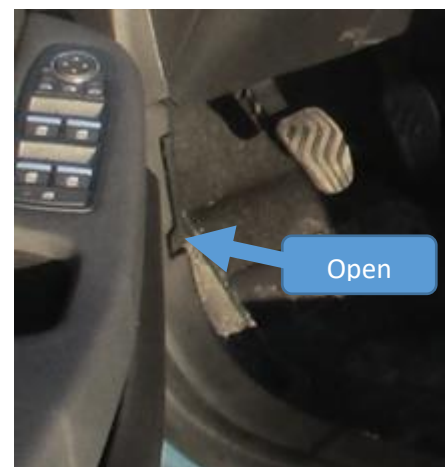


## ENGINE

You should check the engine oil often. You may have to add windshield washer fluid several times. The hood opening lever is located on the left side of the driver's footwell.

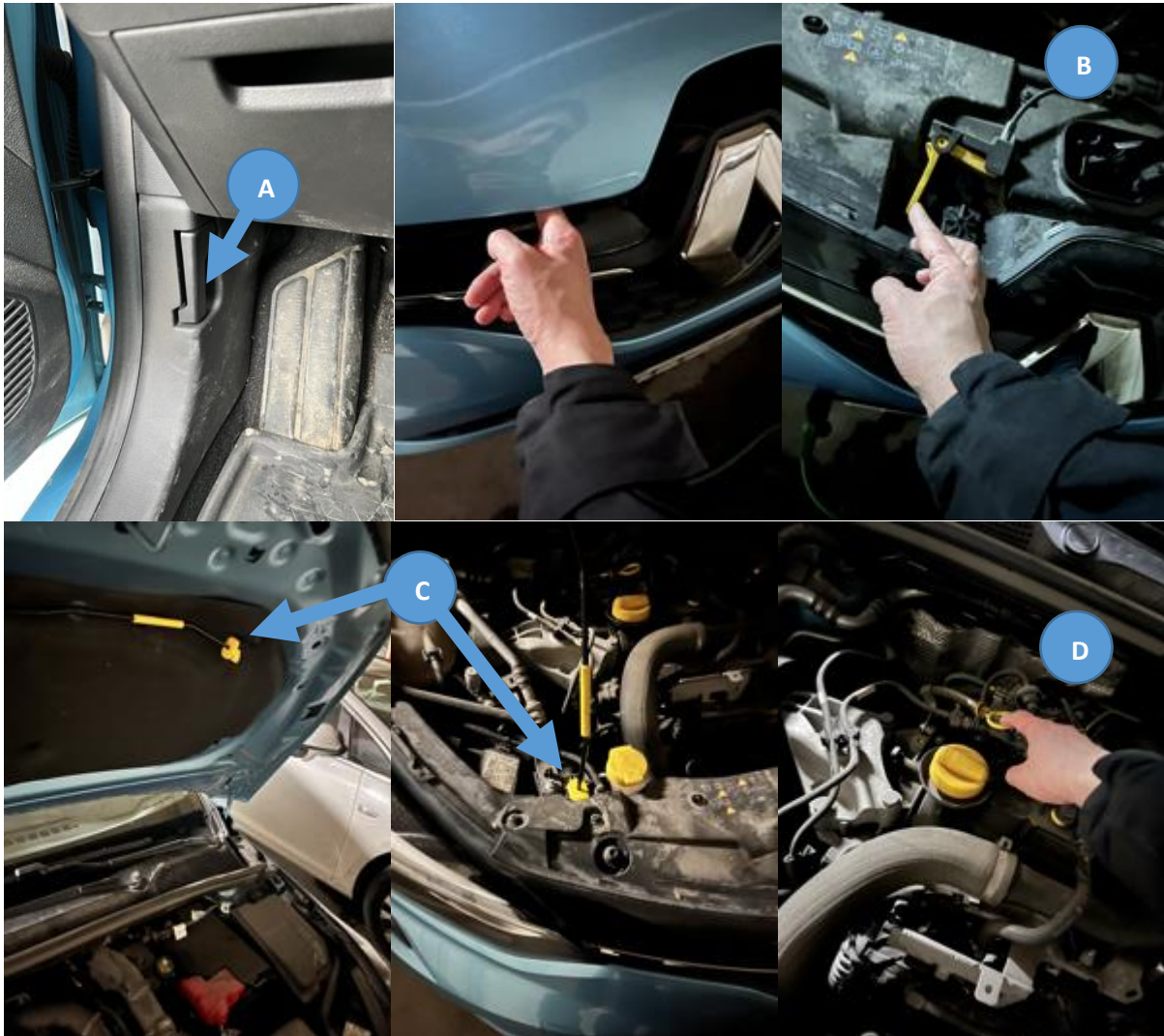


- A) Oil check
- B) Oil
- C) Windshield washer fluid
- D) Bonnet support
- E) Bonnet opening lever
- F) Battery



## ENGINE

To open the hood, first pull the locking lever (A) in the driver's footwell. Next, open the hood by pushing the release lever (B) to the side so you can lift the hood up. Place the hood support (C) down. Check the oil by pulling out the dipstick (D). Clean the dipstick with clean paper and put it back in place. Rotate the dipstick a couple of times before pulling it out and checking the oil level.







AUTOKOULU **Eco**